

# On Internships

Let us begin with the basics:

**How many applications we had received every month on average in 2020-22?**



Chart 1.1

**Chart 1.2: What was the students' intake % in the years 2020-22? [Research Internships]**

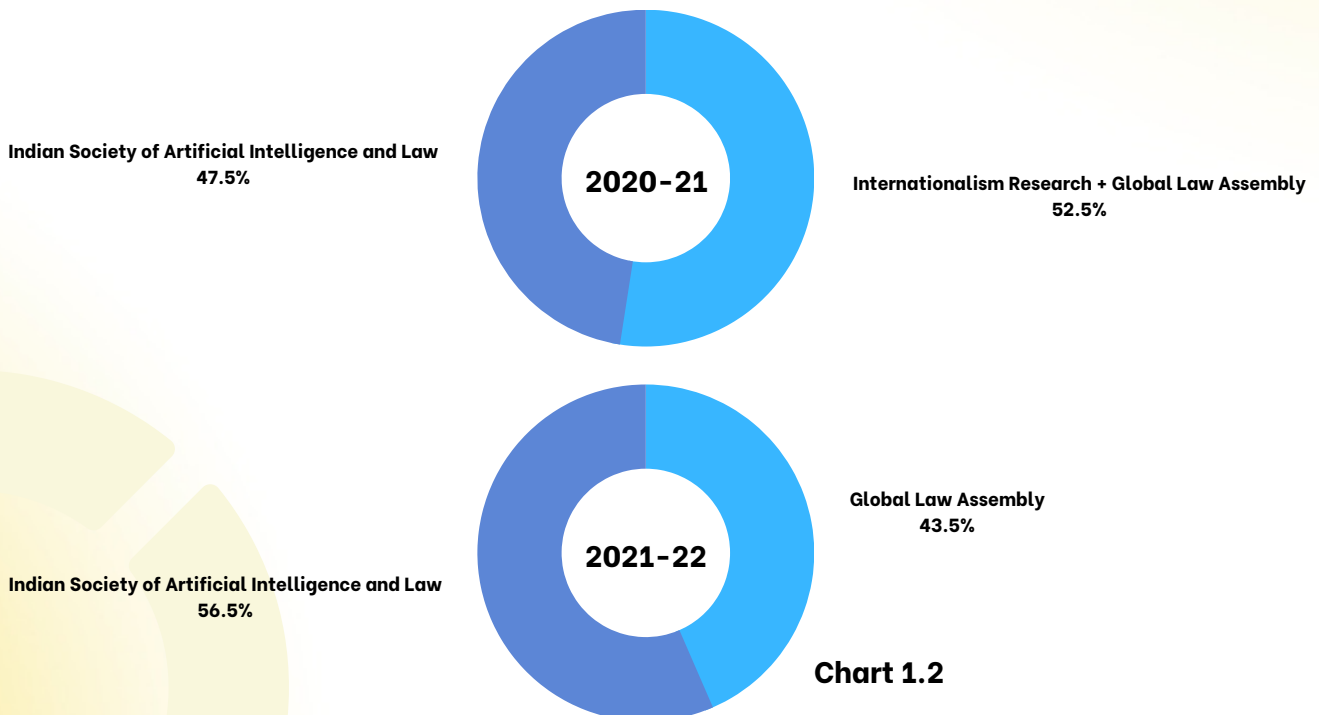


Chart 1.2

# VLiGTA's Research History

## Charts 1.3 and 1.4: Research Area Diversity {Research Internships}

This is the graph representing which different main research areas of students for research internships.

The first graph focuses on areas, which have been related with the ethics of artificial intelligence, and the second graph focuses on areas related to the Indo-Pacific region and international law studies.

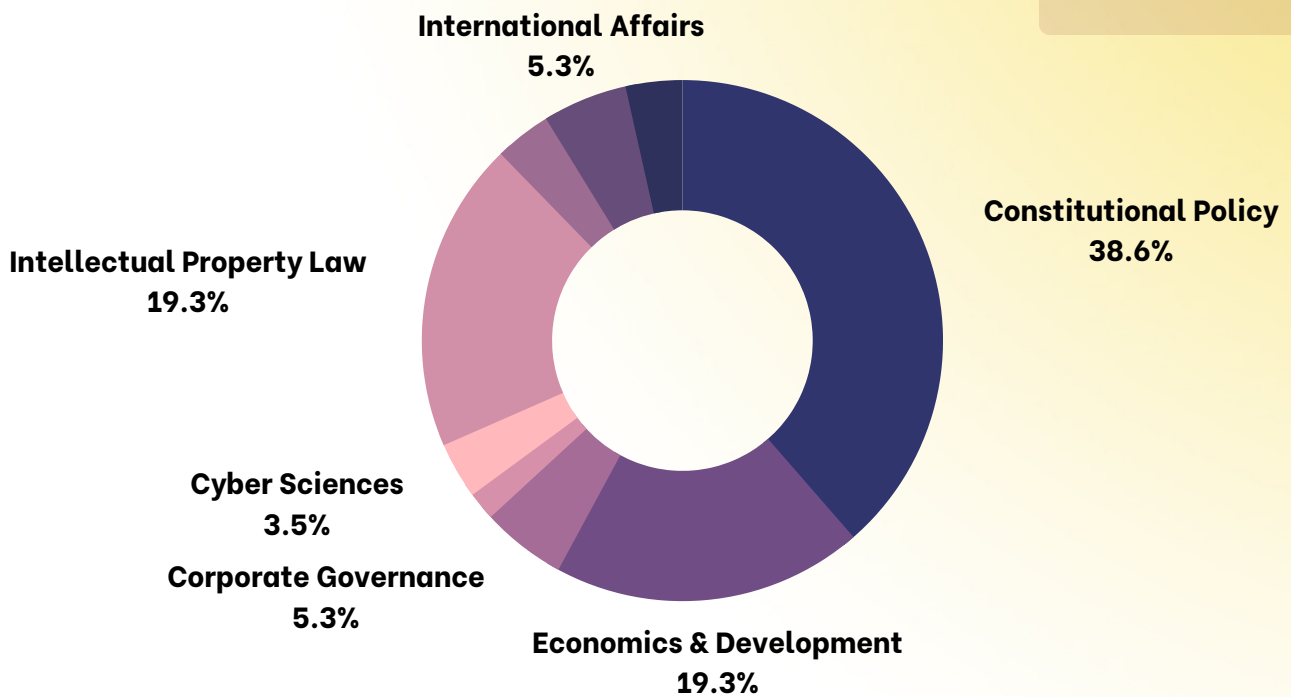


Chart 1.3

# VLiGTA's Research History

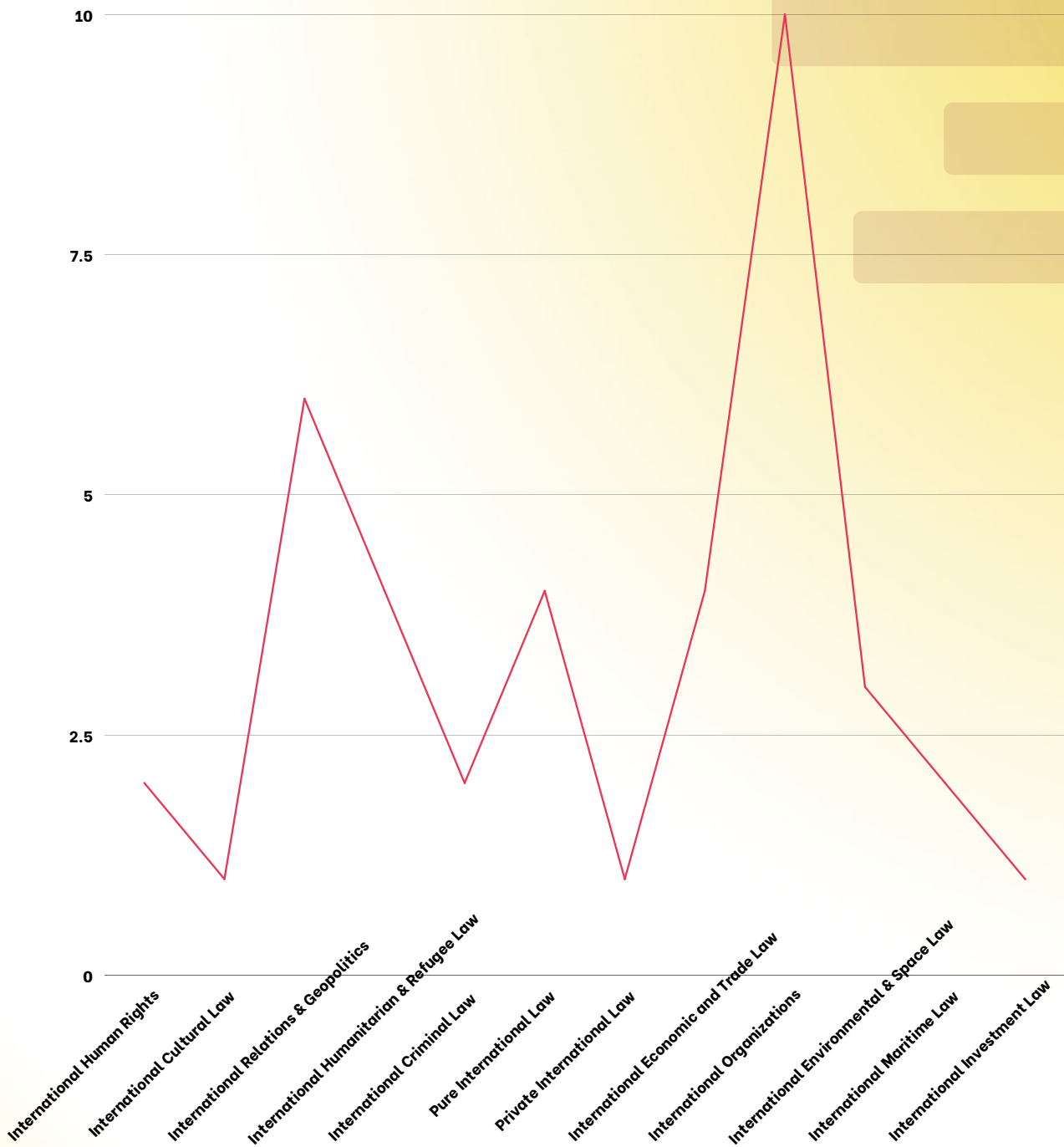


Chart 1.4

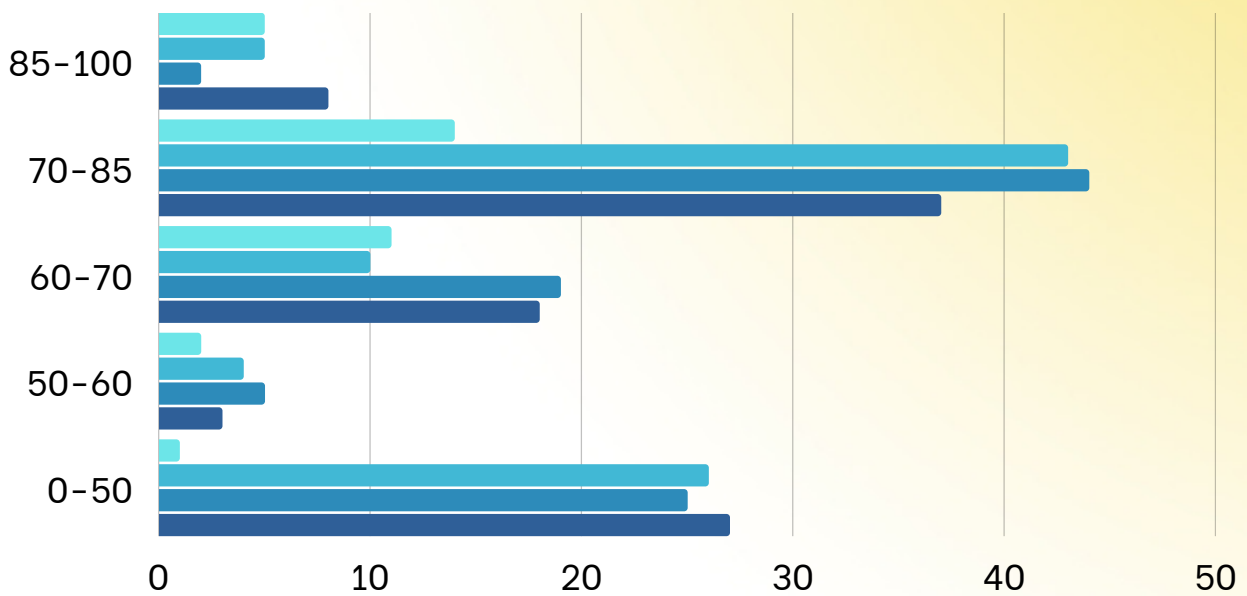
# VLiGTA's Research History

## Charts 1.5-1.6: Research Productivity and Innovativeness [Research Internships]

These graphs represent how many students who opted for research internships in the years 2020-22 were productive and innovative in their research activities.

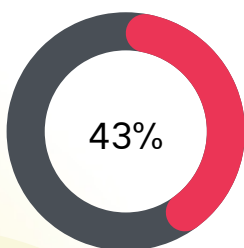
The charts depicts research productivity on the basis of these parameters:

- Academic, Intellectual & Schematic Brevity (light blue)
- Academic Credibility (medium blue)
- Research Consistency (dark blue)
- All-Comprehensiveness in Research (darkest blue)



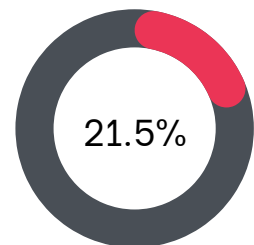
**Chart 1.5**

The scores 0-100 as mentioned in decreasing order in this graph depict the score ranges allotted to the interns in each of the areas of evaluation in their respective areas.



former interns approx. were **highly productive** in research.

former interns approx. were **productive on average** in research.



**Chart 1.6**